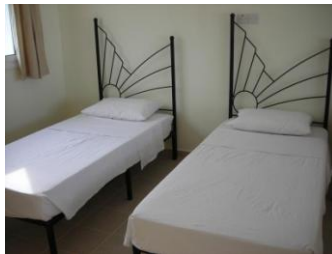


2 BEDROOM GROUND FLOOR APARTMENT – BAHCELI

RENT FROM ONLY £250 P.W.



Overlooking the new Port Cyprium Marina and in close proximity to the Beach at Crystal Bay, this property offers a prime location holiday home. Communal facilities including 2 large pools, gardens, restaurant and gym. This apartment overlooks the crystal clear Mediterranean Sea with its natural bays and beaches and, has stunning mountain views to the South.

This 2 bedroom apartment benefits from a large patio and is 'as close as you can get' to one of the communal pools. The lounge and dining area are open plan leading to a fully-equipped kitchen. There are two double bedrooms (one double and one twin). The master bedroom has its own en-suite and is located on the upper mezzanine with stunning views across the development and to the sea.

This property is tastefully furnished and ideal for a family holiday/short-term or long-term needs. A sleek architectural designed property, that offers comfort and quality.

For information on this property or any other property please contact:

(0044) 20 8123 7929 / (0090) 533 843 4661

www.propertymanagement-northcyprus.com

www.northcyprusinternational.com

North Cyprus International, Registered Estate Agent No. 161, TRNC