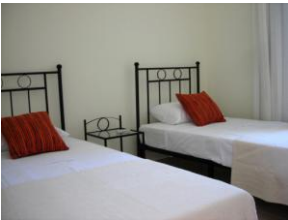
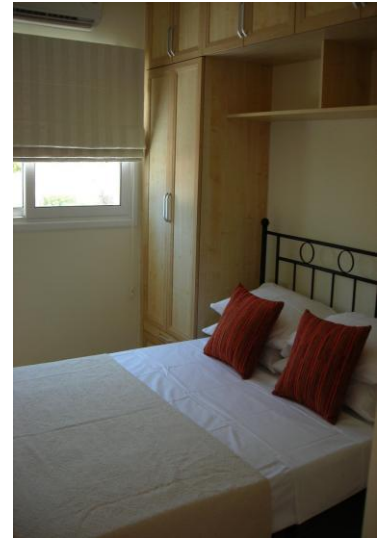


2 BEDROOM PENTHOUSE APARTMENT – BAHCELI

RENT FROM ONLY £250 P.W.



Overlooking the forthcoming Port Cyprium Marina and in close proximity to the new Golf Course & Country Club, this property offers a prime location holiday home. Fantastic communal facilities available including 2 large pools, gardens, restaurant and gym. Situated on the lush green hillside of Esentepe, overlooking the crystal clear Mediterranean Sea, you will find stunning mountain views to the South and a spectacular view of the Mediterranean coastline with its natural bays and beaches.

This well-appointed 2 bedroom penthouse apartment benefits from a large patio and roof terrace overlooking both the sea to the front and the mountains to the rear. The lounge and dining area are open plan with a fully-equipped galley kitchen running the length of the apartment. There are two double bedrooms (one double and one twin) with separate family bath/shower room.

This property is tastefully furnished and ideal for a family holiday, business visit and with all your short-term or long-term needs. A sleek architectural designed property, that offers comfort and quality.

For information on this property or any other property please contact:

(0044) 20 8123 7929 / (0090) 533 843 4661

www.propertymanagement-northcyprus.com

www.northcyprusinternational.com

North Cyprus International, Registered Estate Agent No. 161, TRNC